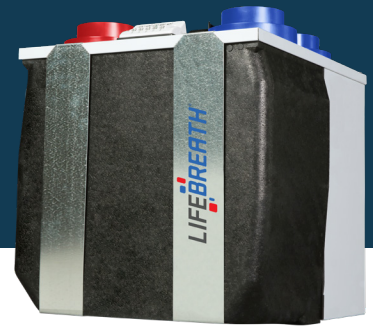


# 30 ERV

## ENERGY RECOVERY VENTILATOR



### SUPERIOR PERFORMANCE IN A SMALL PACKAGE

Our smallest unit to date. Ideal for small homes and town homes with tight space requirements. Features a top port design, door port balancing, 4" duct connections and our ERV core.

- Enthalpy energy exchange core
- Adjustable dampers
- Top ported, super compact design

### ENGINEERING DATA:

#### TOTAL RECOVERY CORE

Cross-flow energy recover core transfers heat and water vapor between two airstreams. Easily removed for cleaning or service.

#### MOTORS AND BLOWERS

Each airstream has an independent motorized impeller with multiple fan speed operation.

#### FILTERS

Washable air filters in exhaust and supply airstreams.

#### MOUNTING

Hanging straps supplied.

#### DEFROST

Temperature sensor activated, periodically shuts down supply motor. Drains not required.

#### CASE

20 gauge prepainted galvanized steel for superior corrosion resistance, insulated to prevent exterior condensation.

#### INSTALLER SELECTABLE HIGH SPEED SETTINGS

Adjustable DIP switches are located on the circuit board. Hi3 is the factory setting. Refer to the installation manual for the adjustment instructions.

#### ELECTRONICS

Main control can be wall mounted in a central location. 3 wire 20 gauge (min.) 100 ft. length (max.)

### OPTIONAL ACCESSORIES:

**TechGrille**  
99-EAG4  
99-EAG5  
99-EAG6  
99-EAG8



**Terminator Fitting**  
99-TM4  
99-TM5



**Wireless 20/40/60 Min Timer**  
99-DET02



**Dual Hood**  
99-190



**Weather Hoods**  
99-185



### LIFEBREATH CONTROL OPTIONS

| FEATURES   | 99-DXPLO2 | 99-BC02 | 99-BC03 | 99-BC04 |
|--|-----------|---------|---------|---------|
| 5 speed fan operation on each mode               | ✓         |         |         |         |
| 2 speed fan operation (Low/High)                 |           | ✓       |         | ✓       |
| Continuous low speed fan operation               | ✓         | ✓       | ✓       | ✓       |
| Humidity control through adjustable Dehumidistat | ✓         | ✓       | ✓       |         |
| Large digital LCD screen                         | ✓         |         |         |         |
| LED status indicator lights                      |           | ✓       | ✓       | ✓       |
| Continuous Ventilation                           | ✓         | ✓       | ✓       | ✓       |
| Continuous Recirculation                         | ✓         |         | ✓       |         |
| 20 ON/40 OFF                                     | ✓         |         | ✓       | ✓       |
| 10 ON/50 OFF                                     | ✓         |         |         |         |
| 20 ON/40 Recirculation                           | ✓         |         | ✓       | ✓       |
| 20/40/60 min. High speed override button         | ✓         |         |         |         |
| Compatible with 99-DET02 Wireless Timer          | ✓         | ✓       | ✓       | ✓       |
| 3 wire connection                                | ✓         | ✓       | ✓       | ✓       |

### TIMER OPTIONS

#### 99-DET01 - Lifebreath 20/40/60 Minute Timer

Initiates high speed Ventilation for 20, 40 or 60 minutes. 3 wire connection.

#### 99-DET02 - Wireless Lifebreath 20/40/60 Minute Timer

Initiates high speed Ventilation for 20, 40 or 60 minutes. Wirelessly connects to main control for ease of installation. 40' approximate range. **Exclusive to Lifebreath.**

#### 99-RX02 - Wireless Lifebreath Repeater

Extends range of 99-DET02 Wireless Timers. Plugs into 120V power outlet. Wirelessly connects to main control and 99-DET02. Install at halfway point between timer and main wall control if timer is out of range.



99-BC02

99-BC03

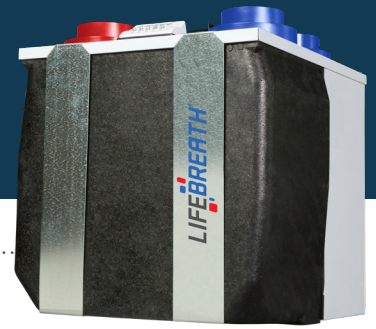
99-BC04

99-DET02

99-DET01

# 30 ERV

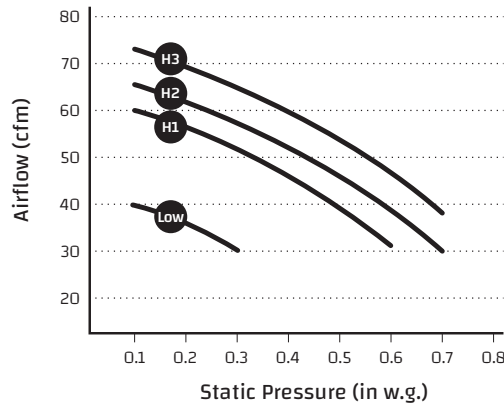
## ENERGY RECOVERY VENTILATOR



### PERFORMANCE

| IN. W.G. (PA)         | 0.1 (25)<br>CFM (L/s) | 0.2 (50)<br>CFM (L/s) | 0.3 (75)<br>CFM (L/s) | 0.4 (100)<br>CFM (L/s) | 0.5 (125)<br>CFM (L/s) | 0.6 (150)<br>CFM (L/s) | 0.7 (175)<br>CFM (L/s) |
|-----------------------|-----------------------|-----------------------|-----------------------|------------------------|------------------------|------------------------|------------------------|
| Net Supply Airflow    | 72 (34)               | 68 (32)               | 63 (30)               | 57 (27)                | 50 (24)                | 43 (20)                | 36 (17)                |
| Gross Supply Airflow  | 138 (65)              | 136 (64)              | 131 (62)              | 127 (60)               | 121 (57)               | 117 (55)               | 110 (52)               |
| Gross Exhaust Airflow | 138 (65)              | 133 (63)              | 129 (61)              | 125 (59)               | 121 (57)               | 114 (54)               | 110 (52)               |

|   |             |     |
|---|-------------|-----|
| Sensible Effectiveness (ASE)<br>@ 55 CFM (26 L/s) | 32°F (0°C)  | 78% |
| Sensible Efficiency (SRE)<br>@ 55 CFM (26 L/s)    | 32°F (0°C)  | 70% |
| Total Efficiency (TRE)<br>@ 63 CFM (30 L/s)       | 90°F (35°C) | 48% |



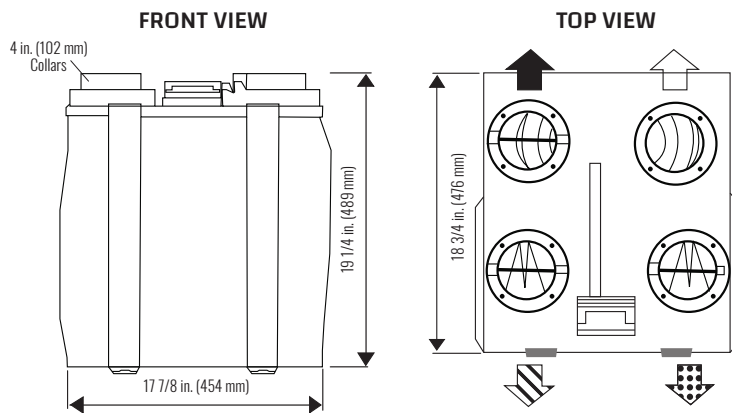
| ELECTRICAL SPECIFICATIONS |      |
|---------------------------|------|
| VAC @ 60Hz                | 120  |
| Watts / Low Speed         | 44   |
| Watts / High Speed        | 57   |
| Amp Rating                | 0.48 |

WEIGHT:  
**33 LBS (15 KG)**

SHIPPING WEIGHT:  
**36 LBS (16 KG)**

**NOTE:**  
Front clearance of 25 in. (635 mm) is recommended for servicing unit. All ducts use 4 in. (102 mm) round collars. Balancing dampers are located in all air streams.

### DIMENSIONS



#### Airflow:

- ◻ Stale Air to Outside
- ◻ Fresh Air from Outside
- ◻ Stale Air from Inside
- ◻ Fresh Air to Inside

Date: \_\_\_\_\_ Contractor: \_\_\_\_\_

Tag: \_\_\_\_\_ Supplier: \_\_\_\_\_

Project: \_\_\_\_\_ Qty: \_\_\_\_\_ Quote #: \_\_\_\_\_

Engineer: \_\_\_\_\_ Submitted By: \_\_\_\_\_

Control: \_\_\_\_\_ Timer: \_\_\_\_\_ Timer Qty: \_\_\_\_\_

#### WARRANTY

Units carry a 5 year warranty on the enthalpic (ERV) core and a 5 year replacement parts warranty.

All units conform to CSA and UL standards



www.lifebreath.com