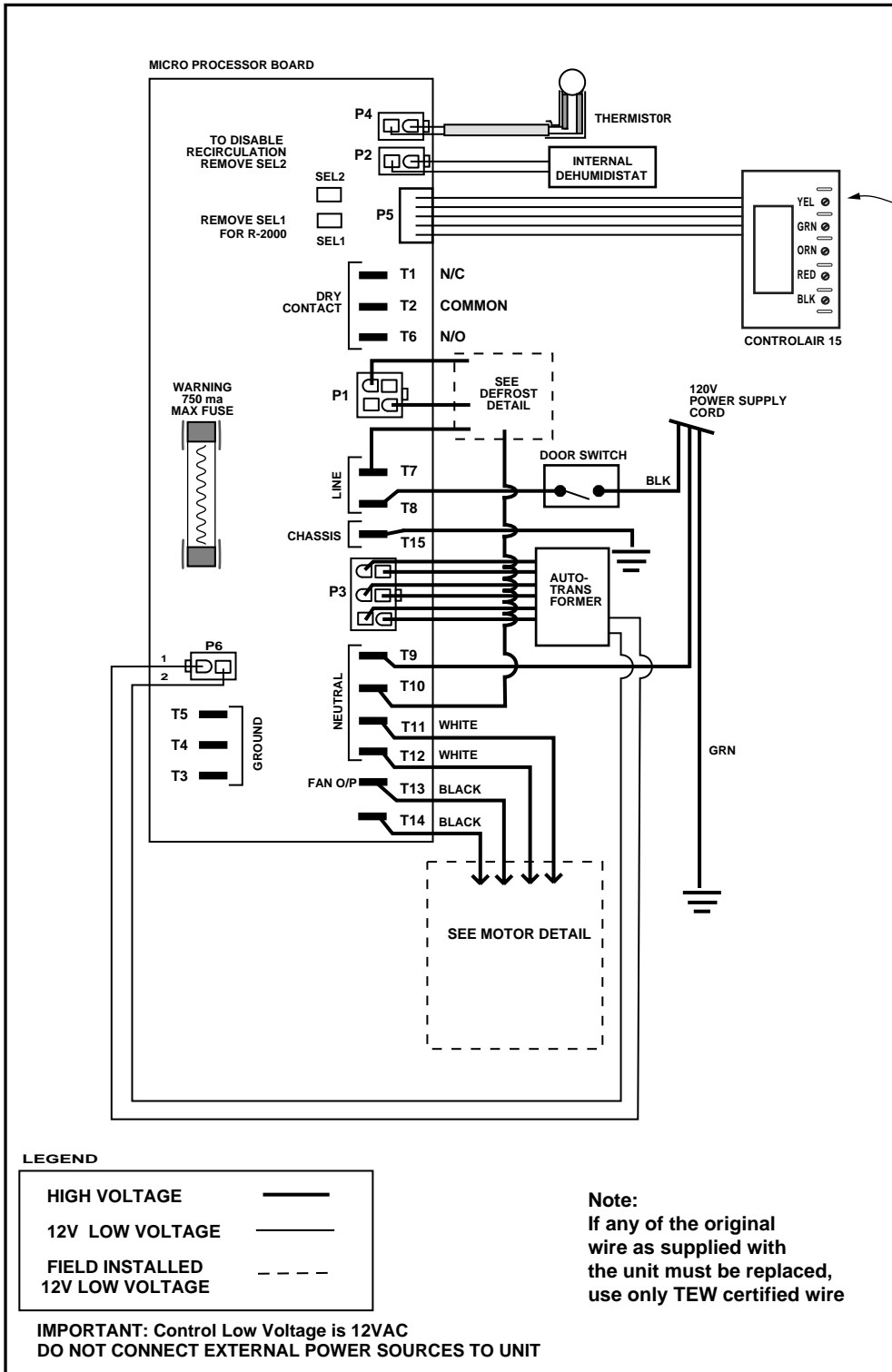
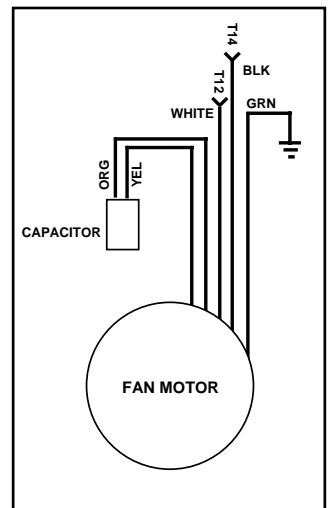
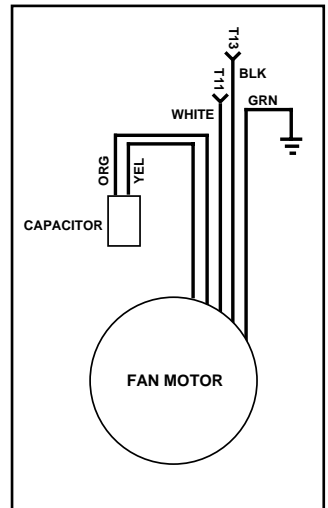


WIRING DIAGRAM 500 (DAMPER DEFROST)



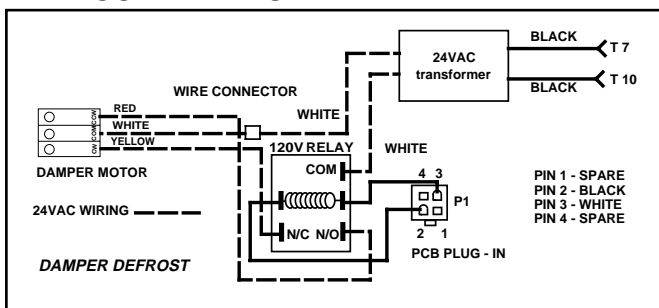
Note:
All control connections are labeled by colour. Connect to corresponding colour with low voltage wire (20 gauge minimum).
A dry contact closure between red & black will initiate high speed override.

FAN MOTOR DETAILS



Note:
If any of the original wire as supplied with the unit must be replaced, use only TEW certified wire

DEFROST DETAILS



AUTO-TRANSFORMER DETAIL

