

# WHY CHOOSE **LIFEBREATH**<sup>®</sup>

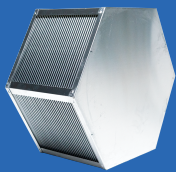
Indoor Air Systems

For over 4 decades, Lifebreath has been at the forefront of indoor air quality (IAQ) solutions. Our products are designed, engineered, and manufactured in our ISO 9001 certified, 65,000 square foot North American facility, ensuring the highest standards of quality and performance.

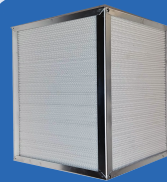
Specializing in Heat Recovery Ventilators (HRVs) and Energy Recovery Ventilators (ERVs) for both residential and light commercial applications, our systems are designed to optimize energy efficiency, enhance comfort, and promote a healthier environment by reducing humidity, pollutants, and allergens.

## QUALITY IS IN THE AIR

### LIFEBREATH RESIDENTIAL HEAT & ENERGY RECOVERY VENTILATOR WARRANTY



**HRV UNIT WARRANTY**  
**Core: Lifetime**  
**Replacement Parts: 5-year**



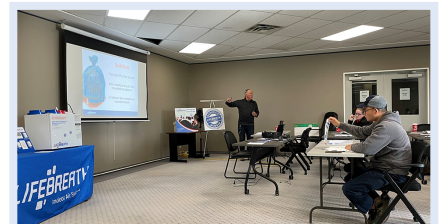
**ERV UNIT WARRANTY**  
**Core: 5-year**  
**Replacement Parts: 5-year**

## LIFEBREATH<sup>®</sup> ACADEMY



This course is designed specifically for contractors who are looking to upgrade their skills while increasing customer satisfaction and confidence.

We can provide training to any sized organization or individual. Join us virtually, at your location, or one of our training facilities.



[@lifebreathIAQ.com](https://www.instagram.com/lifebreathIAQ.com)

1-855-247-4200  
[www.lifebreath.com](http://www.lifebreath.com)





ERV

### MAX XTR

- 184 CFM @ 0.3
- 84% (SRE) at 64 CFM and 32°F
- Auto balancing
- Square ERV core
- ECM Motor
- 6" round ducts



ERV

### 130 ERVD

- 153 CFM @ 0.3
- 75% (SRE) at 89 CFM and 32°F
- -25°C HVI Cold Weather Cert.
- Recirculating damper defrost system
- Built-in balancing dampers



ERV

### METRO 120 ERV

- 129 CFM @ 0.3
- 69% (SRE) at 49 CFM and 32°F
- Ultra Compact, height 9.75"
- No drains required
- Hard wired & mirrored configurations available



HRV

### RNC 205

- 182 CFM @ 0.3
- 76% (SRE) at 64 CFM and 32°F
- Door port balancing
- Adjustable dampers
- Outstanding cold weather performance



HRV

### RNC6-ES

- 163 CFM @ 0.3
- 65% (SRE) at 64 CFM and 32°F
- 5" duct connections
- Adjustable dampers
- Recirculating defrost cycle
- Square aluminum/polymer core



HRV

### RNC 155 2019\*

- 148 CFM @ 0.3
- 75% (SRE) at 64 CFM and 32°F
- Top & side ports
- Lifetime warranty on core
- Energy Star certified
- Recirculating defrost



### CONTROLS & TIMERS

- Deluxe digital wall control with LED screen
- Basic wall control with 2 fan settings (LOW / HIGH)
- Wired and wireless simple timers (20, 40, 60 min fan)



### ACCESSORIES & PARTS

- Replacement parts
- Filters
- Grills
- Fittings
- Various kits
- And much more



### LIGHT COMMERCIAL

- Use with or without a ducted forced air system
- Various duct configurations available
- AHRI 1060 certified
- 15-year warranty on HRV core